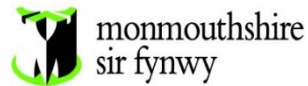


# Public Document Pack



Neuadd y Sir  
Y Rhadyr  
Brynbuga  
NP15 1GA

Dydd Mercher, 11 Mai 2016

## Hysbysiad o gyfarfod

### Pwyllgor Craffu Plant a Phobl Ifanc

Dydd Iau, 19eg Mai, 2016 at 10.00 am  
Neuadd Y Sir, Y Rhadyr, Brynbuga, NP15 1GA

#### AGENDA

**BYDD CYFARFOD CYN I AELODAU'R PWYLLGOR 30 COFNODION CYN I'R  
CYCHWYN Y CYFARFOD**

Eitem ddim	Eitem	Tudalennau
1.	I nodi apwyntiad o Gadeirydd Pwyllgor Craffu Plant a phobl ifanc.	
2.	Apwyntiad o Is- Gadeirydd.	
3.	Ymddiheuriadau am absenoldeb	
4.	Datganiadau o Fuddiant	
5.	Cadarnhau cofnodion y cyfarfod blaenorol	1 - 6
6.	Archwiliad o Raglenni Cymorth Teuluol.  Adults Select Committee Members are invited to attend the Select Committee meeting to scrutinise this agenda item, as it affects both the Children and Young People Select Committee and the Adults Select Committee.	7 - 14
7.	Taclo tlodi yn Sir Fynwy.  Adults Select Committee Members are invited to attend the Select Committee meeting to scrutinise this agenda item, as it affects both the Children and Young People Select Committee and the Adults Select Committee.	15 - 22
8.	Rhaglenni Gwaith.	23 - 34

---

**Paul Matthews**

**Prif Weithredwr**

## CYNGOR SIR FYNWY

### MAE CYFANSODDIAD Y PWYLLGOR FEL SY'N DILYN:

Cynghorwyr Sir:

P. Jones  
P. Farley  
P. Clarke  
L. Guppy  
R. Harris  
M. Hickman  
S. Howarth  
D. Jones  
M. Powell  
M Fowler (Parent Governor Representative)  
C Robertshaw (Parent Governor Representative)  
Vacancy (Catholic Church)  
K Plow (Association of School Governors)  
D. Dovey  
E. Hackett Pain  
R. Chapman  
R. Edwards  
P. Jordan  
P. Watts  
A. Wintle  
D Hill  
D Hudson

## Gwybodaeth Gyhoeddus

### **Mynediad i gopiau papur o agendâu ac adroddiadau**

Gellir darparu copi o'r agenda hwn ac adroddiadau perthnasol i aelodau'r cyhoedd sy'n mynychu cyfarfod drwy ofyn am gopi gan Gwasanaethau Democrataidd ar 01633 644219. Dylid nodi fod yn rhaid i ni dderbyn 24 awr o hysbysiad cyn y cyfarfod er mwyn darparu copi caled o'r agenda hwn i chi.

### **Edrych ar y cyfarfod ar-lein**

Gellir gweld y cyfarfod ar-lein yn fyw neu'n dilyn y cyfarfod drwy fynd i [www.monmouthshire.gov.uk](http://www.monmouthshire.gov.uk) neu drwy ymweld â'n tudalen Youtube drwy chwilio am MonmouthshireCC. Drwy fynd i mewn i'r ystafell gyfarfod, fel aelod o'r cyhoedd neu i gymryd rhan yn y cyfarfod, rydych yn caniatáu i gael eich ffilmio ac i ddefnydd posibl y delweddau a'r recordiadau sain hynny gan y Cyngor.

### **Y Gymraeg**

Mae'r Cyngor yn croesawu cyfraniadau gan aelodau'r cyhoedd drwy gyfrwng y Gymraeg neu'r Saesneg. Gofynnwn gyda dyledus barch i chi roi 5 diwrnod o hysbysiad cyn y cyfarfod os dymunwch siarad yn Gymraeg fel y gallwn ddarparu ar gyfer eich anghenion.

# Nodau a Gwerthoedd Cyngor Sir Fynwy

## Cymunedau Cynaliadwy a Chryf

### Canlyniadau y gweithiwn i'w cyflawni

#### Neb yn cael ei adael ar ôl

- Gall pobl hŷn fyw bywyd da
- Pobl â mynediad i dai addas a fforddiadwy
- Pobl â mynediad a symudedd da

#### Pobl yn hyderus, galluog ac yn cymryd rhan

- Camddefnyddio alcohol a chyffuriau ddim yn effeithio ar fywydau pobl
- Teuluoedd yn cael eu cefnogi
- Pobl yn teimlo'n ddiogel

#### Ein sir yn ffynnu

- Busnes a menter
- Pobl â mynediad i ddysgu ymarferol a hyblyg
- Pobl yn diogelu ac yn cyfoethogi'r amgylchedd

### Ein blaenoriaethau

- Ysgolion
- Diogelu pobl agored i niwed
- Cefnogi busnes a chreu swyddi
- Cynnal gwasanaethau sy'n hygyrch yn lleol

### Ein gwerthoedd

- **Bod yn agored:** anelwn fod yn agored ac onest i ddatblygu perthnasoedd ymddiriedus
- **Tegwch:** anelwn ddarparu dewis teg, cyfleoedd a phrofiadau a dod yn sefydliad a adeiladwyd ar barch un at y llall.
- **Hyblygrwydd:** anelwn fod yn hyblyg yn ein syniadau a'n gweithredoedd i ddod yn sefydliad effeithlon ac effeithiol.
- **Gwaith tîm:** anelwn gydweithio i rannu ein llwyddiannau a'n methiannau drwy adeiladu ar ein cryfderau a chefnogi ein gilydd i gyflawni ein nodau.

# Public Document Pack Agenda Item 5

## MONMOUTHSHIRE COUNTY COUNCIL

Minutes of the meeting of Children and Young People Select Committee held at County Hall, The Rhadyr, Usk, NP15 1GA on Thursday, 17th March, 2016 at 2.00 pm

**PRESENT:** County Councillor P. Jones (Chairman)  
County Councillor P. Farley (Vice Chairman)

County Councillors: L. Guppy, P. Clarke, R. Harris, S. Howarth,  
D. Jones, M. Powell.

M Fowler (Parent Governor Representative) and  
K Plow (Association of School Governors)

Also in attendance Councillor V. Smith

### **OFFICERS IN ATTENDANCE:**

Hazel Ilett	Scrutiny Manager
Clair Evans	Acorn Project Manager
Sarah King	Senior Democratic Services Officer
Matthew Lewis (Countryside)	Countryside Manager
Mike Moran	Community Infrastructure Coordinator
Beth Watkins	Flying Start Manager

### **APOLOGIES:**

Councillors M. Hickman

#### **1. Declarations of Interest**

None

#### **2. To confirm the minutes of the previous meeting**

- i) We confirmed and signed the minutes of the Special Children and Young People's Select Committee meeting held on 11<sup>th</sup> Feb 2016, subject to the following amendment:

##### **Apologies from K. Plow**

- ii) We confirmed and signed the minutes of the Children and Young People's Select Committee meeting held on 22<sup>nd</sup> February 2016, subject to the following amendment:

**Mr Robertshaw resigned and not noted.  
D. Jones apologies**

#### **3. Play Sufficiency report**

#### **Context:**

## MONMOUTHSHIRE COUNTY COUNCIL

### Minutes of the meeting of Children and Young People Select Committee held at County Hall, The Rhadyr, Usk, NP15 1GA on Thursday, 17th March, 2016 at 2.00 pm

The committee were presented with a report which reported progress on the review of the Play Sufficiency Assessment and preparation of a new action plan for 2016/17.

The first statutory Play Sufficiency Assessment (PSA) was completed in 2013 and requires review after three years. The new PSA must be submitted to Welsh Government by 31 March 2016, having either been approved by cabinet or in a final version timetabled to be so approved. The PSA is programmed for cabinet consideration in April 2016.

#### **Key Issues:**

The matters needing to be taken into account in the PSA are set out in the guidance and are broad in their scope, impacting widely across the authority's activities:

Matter A: Population

Matter B: Providing for diverse needs

Matter C: Space Available for Children to Play

- Open Spaces; Outdoor unstaffed designated play spaces; Playing fields

Matter D: Supervised provision

- Play work provision; Structured recreational activities

Matter E: Charges for play provision

Matter F: Access to space/provision & Information; publicity; events

Matter G: Securing & Developing the Play Workforce

Matter H: Community engagement and participation

Matter I: Play within all relevant policy and implementation agendas

- Education/schools; Town & country planning; Traffic & transport; Health & wellbeing; Child poverty; Early years/childcare and family policy and initiatives; Inter-generational policy and initiatives; Community development; Community Safety; Health and safety

#### **Member Scrutiny:**

- Members recognised the difficulties which had been highlighted by officers, particularly in relation to resources. The committee appreciated the effort and good will behind the project.
- The committee stressed that increased local knowledge was required, which would require further work with town and community councils.
- Clarification was requested regarding the phrase within the reports, some adults say 'not to play' and some say 'yes play'. It was explained, that in context, some parents had expressed concerns with going out to play and other adults had told people that children could not play (e.g. around streets).
- The committee welcomed the information that had been presented. However, further statistical data was required.
- Officers confirmed that data varied, fixed play provision information was available and a refined approach was required based on the information that had been obtained.
- The concept of sufficiency was difficult to measure, officers were aware of the provision to a degree and the area most lacking was consistency around demand. Officers were committed in going forward, however, there were lack of resources.
- The committee reiterated that further assistance and feedback should be obtained from Town and Community Councils. It was confirmed that this was anticipated however, timescales were difficult due to capacity issues.
- Members requested clarity on validity of data and asked how many questionnaire responses were received. We were informed that 100 had been received completed. Concerns were expressed by members that this was not a representative sample.

## MONMOUTHSHIRE COUNTY COUNCIL

### Minutes of the meeting of Children and Young People Select Committee held at County Hall, The Rhadyr, Usk, NP15 1GA on Thursday, 17th March, 2016 at 2.00 pm

- A member echoed opening remarks, valuable work was being undertaken within constraints. Comparable information was requested regarding play provision in other areas. We were advised that Torfaen were a widespread area, Newport efforts were more concentrated on deprivation and social housing, working in collaboration with other organisations in the sector. Vale of Glamorgan had most similarities to Monmouthshire.
- Officers had sources for information, however, resources were an issue. The aim was for objectives to be considered for the forthcoming year, and for actions to be realistic and limited. Regular dialogue was held with Town and Community Councils.
- The committee concurred that permission to focus on a smaller number of achievable objectives would be a positive way forward, particularly with regard to resource issues.

#### **Recommendations:**

The Committee agreed to receive and scrutinise an update of progress on the review of the Play Sufficiency Assessment and preparation of a new action plan for 16/17 prior to its submission to Welsh Government on 31 March 2016.

#### **Committee's Conclusion:**

Chair's Summary:

Recommendations had been considered and suggestions had been put forward by the committee. The overriding suggestion, was to limit the number of objectives and actions as the way forward.

Officers were encouraged to look at the youth service and role of Town and Community Councils for contributions and ideas.

The Committee thanked officers for information presented regarding play provision model and appreciated that there was good will, however, recognised the difficulties that had been expressed.

#### **4. Flying Start - Presentation outlining progress and performance to date**

The Chair welcomed officers and highlighted that members should have been presented with a report or received a copy of the presentation in advance.

#### **Context:**

We received a presentation which highlighted progress and Performance of the Flying Start Project.

#### **Key Issues:**

The presentation highlighted the following issues:

- Targeted Services
- Original Flying Start Areas
- Flying Start Expansion Areas
- Entitlements

## MONMOUTHSHIRE COUNTY COUNCIL

### Minutes of the meeting of Children and Young People Select Committee held at County Hall, The Rhadyr, Usk, NP15 1GA on Thursday, 17th March, 2016 at 2.00 pm

- Rates of return to human capital investment
- What can go wrong
- Risk Factors
- Population Outcomes
- Performance Measures
- Schedule of Growing Skills (SogS)
- Infant and Toddler Environmental Scale
- Quality Improvement
- Childcare Attendance
- Accident Prevention
- Advice and Support

#### **Member Scrutiny:**

- The committee welcomed the information presented, it was described as enlightening and members recognised the importance of the service.
- Officers were congratulated on the inspiring presentation, however, urged officers to present a report to members.
- It was suggested that further awareness and publication should be made to people.
- A member asked how much funding had been received from Welsh Government and the effect on the service if funding was reduced. We were informed that the basis of funding was £2200 per child, which covered childcare and services were purchased from ABHB health staff. The effect on the service would be dependent on the level of any cuts, the service was dependent on quality staff, therefore, first priority would be to achieve savings from elsewhere, rather than through staff reductions. Budget had been agreed for the forthcoming year.
- 2016/17.
- Officers were commended and it was noted that the same service was not provided in England.
- A query was raised regarding the longitude angle, study of intervention and effect on children going on to further education. In response, the aim was to ensure the ability to track young children, in transitioning into further study.
- Officers were asked to explain the consequences of the service not being provided. We were informed, that there would be a significant effect on childcare provision, at the age of 3 children are entitled to 12.5 hours of funded childcare. The service enabled younger children to attend a setting and families benefited from childcare provision.
- It was suggested that information could be presented at an all members seminar, to raise the profile of the service.
- In terms of performance measures, a member pinpointed low performance in 2015/16. Officers explained that 2016/16 was the first year the service was provided in the South of the County, relationships and engagement was underway with families. Performance margins were significant, figures would change if appointments were not attended and one health visitor represented 20/25% of the workforce, which had a massive impact on performance delivery.
- The committee agreed that issues should be scrutinised by select, particularly in relation to the effect on the service if one staff member was unavailable (e.g due to sickness). The committee were reassured that there were low levels of sickness, however, cover would have to be obtained from other projects.



## MONMOUTHSHIRE COUNTY COUNCIL

Minutes of the meeting of Children and Young People Select Committee held at County Hall, The Rhadyr, Usk, NP15 1GA on Thursday, 17th March, 2016 at 2.00 pm

### **Committee's Conclusion:**

Chair's Summary:

Presentation to be sent to Democratic Services.

Welcomed attendance at a future meeting and encouraged officers to present a report in advance of the meeting.

Performance data to be presented within future reports annually.

Agreed way forward is to go through future programmes report so that we can carry on scrutinising area and be updated on work undertaken.

### **5. Monmouthshire Acorn Project - Presentation**

#### **Context:**

We received a presentation regarding the Acorn Project, which had been established in Monmouthshire, alongside Flying Start.

#### **Key Issues:**

Key issues highlighted within the presentation related to:

- Local Priorities
- Families First National Outcomes
- Families First National Indicators
- Acorn Project Activities/Actions
- Evidence Based Parenting Programmes
- Informal Structured Parenting Groups/Workshops
- Bespoke Packages of Care
- Child Development Childcare
- Project staff
- Team Around the Family
- Referrals
- Evaluation
- Key Headlines

#### **Member scrutiny:**

- The Chair thanked officers for attending, however, urged that the committee required information in advance of the meeting, in order to ensure effective scrutiny.
- A question was asked regarding attendance at the project. Members were reassured that all people involved in the child's life were welcome, this included parents, grandparents, carers, friends.
- The committee welcomed the clarity and detail within the presentation.
- A member highlighted that a report was to be considered by Cabinet and requested further information regarding the report. We noted that it related to reduced staff.

## MONMOUTHSHIRE COUNTY COUNCIL

### Minutes of the meeting of Children and Young People Select Committee held at County Hall, The Rhadyr, Usk, NP15 1GA on Thursday, 17th March, 2016 at 2.00 pm

- The service would be developed and a new plan was being devised. The age would be extended to 18, the 4-18 age had increased. The risks identified were the reduced funding, the Commissioning Group and LSB would be required to identify priorities. However, evidence was in place to bid for further funding.
- The committee expressed concern regarding possible redundancies within the service.

#### **Committee's Conclusion:**

Chair's Summary:

The Chair reiterated that a report should be presented in advance of the meeting, officers were urged to present the purpose and recommendations for select.

Select welcomed annual updates and progress on funding.

The importance of the service was recognised and this should be promoted to full Council.

Information would be requested from the Cabinet Member, regarding proposals for reduced staff and the subsequent impact on the service.

#### **6. Work Programming**

We received and noted the Children and Young People Select Committee work programme and Cabinet/Council forward plan.

We noted additional items:

Special Joint with Adults Select:

- Families First
- JAFF/TAFF
- Anti-poverty

Regular meeting 21<sup>st</sup> April 2016:

- Performance report Children's services

The committee agreed that meetings would not be held at 4.00pm.

#### **7. To confirm the date and time of the next meeting**

We noted the next Children and Young People's Select Committee Meeting would be held on Thursday 11<sup>th</sup> February 2016 at 10.00am.

**The meeting ended at 4.45 pm**

<b>SUBJECT:</b>	<b>FAMILIES FIRST PROGRAMME DELIVERY in MONMOUTHSHIRE</b>
<b>MEETING:</b>	<b>CYP Select Committee</b>
<b>DATE:</b>	<b>19<sup>th</sup> May 2016</b>
<b>DIVISION/WARDS AFFECTED:</b>	<b>All</b>

## 1. PURPOSE:

- 1.1 To provide an overview of Families First provision in Monmouthshire and relevant performance outcomes.
- 1.2 To focus on partnership working to support families in poverty to address their needs.
- 1.3 Families First is one of the key Welsh Government anti-poverty programmes, linked closely to the Flying Start and Supporting People programmes. Its focus is on early intervention and relies on effective partnership working to engage with families to prevent escalation into crisis or need for social services intervention. In Monmouthshire, we have Team around the Family (TAF) and a range of commissioned projects which work together to provide an appropriate mix of provision to support families to address their needs.

Team around the Family (TAF) is a Wales wide approach delivered through Welsh Government's Families First programme. TAF aims to support families early to identify needs and provide support to prevent escalation into crisis. TAF aims to support families in Monmouthshire to reduce the level of need they may be experiencing; this is done by tailoring support with a team of professionals who can provide services to support a family. The TAF process enables families and professionals to work together to deliver services built around the needs of a family, and TAF aims to work with families to identify the right support from the right people at the right time.

Families First Outcomes as set by WG for 2015/16:

- People in low income families gain, and progress within employment
- Children, young people and families achieve their potential
- Children, young people and families are healthy and enjoy wellbeing
- Families are confident, nurturing, resilient and safe

*(See: Appendix 1)*

Families First projects contribute to Monmouthshire Single integrated Plan:

- Theme 2: People are Confident, Capable and Involved
- Outcome 5: Families are Supported.
- Families First also contributes significantly to tackling poverty in Monmouthshire.

**2. RECOMMENDATIONS:**

- 2.1 The Committee review the Families First commissioned projects and understand their function.
- 2.2 The Committee review the TAF model and understand how this contributes to early intervention and support for families.
- 2.3 The Committee be aware of the funding end date of 31<sup>st</sup> March 2017; and the implication for tackling poverty and preventative family support services in Monmouthshire should there be no continuation funding post March 2017.

**3. REASONS:**

**3.1 Overview of Families First Programmes**

- 3.2 In December 2015 Welsh Government provided notification that our indicative budget for Families First funding in 2016-17 is £651,179, which is a £86,081 reduction from 2015-16. This includes a ring-fenced sum of £50,937 for disability support.

In order to manage the reduction in budget a review of our Families First Programmes and the TAF model was undertaken in January 2016. As a result of the review we identified a need to increase the number of TAF cases in Monmouthshire. The new Social Services and Wellbeing Act could potentially increase in the number of '*Children in Need*' which could be referred to Families First and TAF. In this context, we faced the challenge of managing the £86,081 reduction in Families First budget whilst finding additional savings to fund additional TAF worker resource

- 3.3 Families First Projects and funding allocation are as follows:

**Team Around The Family (TAF)**

**2016-17 Funding: £138,390**

With an increased TAF budget for 2016-17, there will be increased capacity within the current TAF team consisting of a TAF Co-ordinator and 3 x TAF Project Officers. To date TAF has relied on a 'volunteer' lead worker model to co-ordinate TAF support for families in Monmouthshire. However, busy professionals, whilst being committed to the multi-agency approach, don't always have the time to pick up lead worker caseloads to the extent which is required. Consequently, the number of families supported by TAF have been relatively low and additional TAF Project Officers will address this issue. The additional TAF Project Officers will also enable us to provide enhanced support to volunteer lead workers whilst increasing our capacity to take on more TAF cases. It will also allow the TAF Co-ordinator to focus on the TAF priorities 2016-17, and increase the number of families supported under the TAF model.

**Acorn**

**2016-17 Funding: £239,786**

The Acorns projects consists of multi-agency teams delivering parenting support, adult learning and advice, early years support (language and play and speech therapy), health and well-being services. It is co-ordinated from Acorn Centre (Integrated Children's Centre) in Abergavenny, and also delivered in other cluster locations across Monmouthshire.

**Inclusive Acorn****2016-17 Funding: £30,900**

Inclusive Acorn supports children with disabilities to access the Acorn Project including working with portage workers, paediatricians, parenting programmes and visiting parents at home to assess children, they also provide childcare to enable parents of children with disabilities to access programmes.

**Face 2 Face Counselling****2016-17 Funding: £76,560**

Provides community based counselling for young people, therapeutic play for children and family system therapy for whole family groups.

**Inclusive Play and Leisure****2016-17 Funding: £20,037**

Access to local authority summer play provision for children with support needs.

**Watch, Wait and Wonder****2016-17 Funding: £17,000**

Is an infant Mental Health project focussing on the quality of the relationship between parents and babies. Clinics are held in the north and south of the county and on-going training in infant observation for 0-3yr olds and their parents.

**Young Carers Project****2016-17 Funding: £50,486**

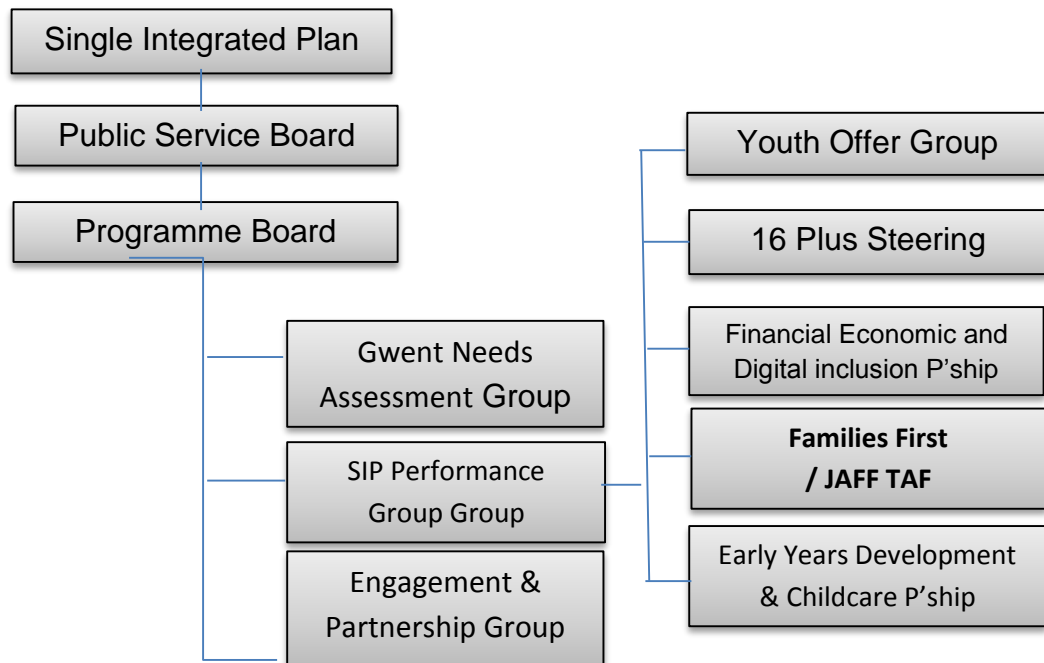
Young Carers are supported through targeted intervention (advocacy and support) to reduce gaps between themselves and universal cohorts of young people / and are supported to engage in education, employment or training.

**Home Start****2016-17 Funding: £31,000**

Works to alleviate the pressures faced by families with low incomes and children under five by placing volunteers who are usually parents themselves to support them.

- 3.4** Families First embraces multi-agency working; it works collaboratively with Social Services, Education, the Youth Service as well as health, housing, the police and range of third sector partners. The Families First Manager and TAF Co-ordinator link with a wide range of PSB partnership groups to ensure a joined-up approach, whilst the Families First / TAF Management Group has representation from a wide range of partner organisations. Partnership working forms a key part of tackling poverty and supporting families across the county, and it is important that Select Committees have a strong oversight of this work and the actions that are being taken.

- 3.5 The current structure within Monmouthshire is depicted in the diagram below indicating the governance of Families First. It sits alongside the Integrated Youth Offer Group, the 16 Plus Steering Group, the Financial Economic and Digital Inclusion Partnership the Early Years Development and Childcare Partnership and others. For the full diagram please refer to Appendix 2: PSB Partnership Landscape



(Appendix 2: Diagram PSB Landscape)

4. **RESOURCE IMPLICATIONS:**

Welsh Government Families First Grant of £651,179 for financial year: 2016-17

5. **SUSTAINABLE DEVELOPMENT AND EQUALITY IMPLICATIONS:**

It should be noted that this is the final year of Families First funding. The programme runs until March 2017 and there is no indication at the time of writing this report that funding will be available past this date.

6. **BACKGROUND PAPERS:**

- Appendix 1: Families First Outcomes 2015-16
- Appendix 2: PSB Landscape

7. **AUTHOR:**

**Andrew Kirby, Families First Programme Manager**  
**Sharran Lloyd, PSB Development Manager**

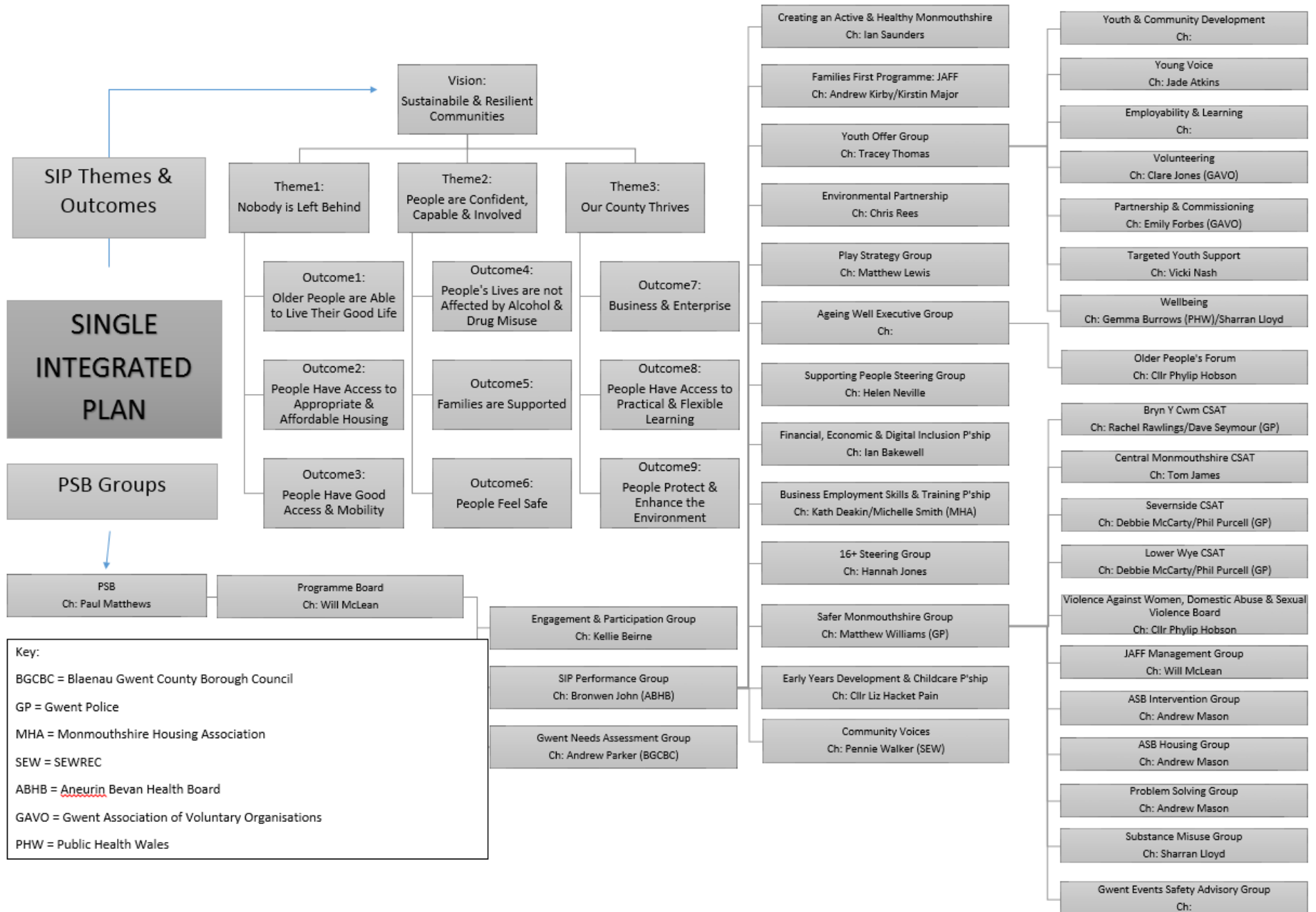
8. **CONTACT DETAILS:**

Tel: 01633 64 4344  
 Email: Andrewkirby@Monmouthshire.gov.uk  
 E-mail: Sharranlloyd@Monmouthshire.gov.uk

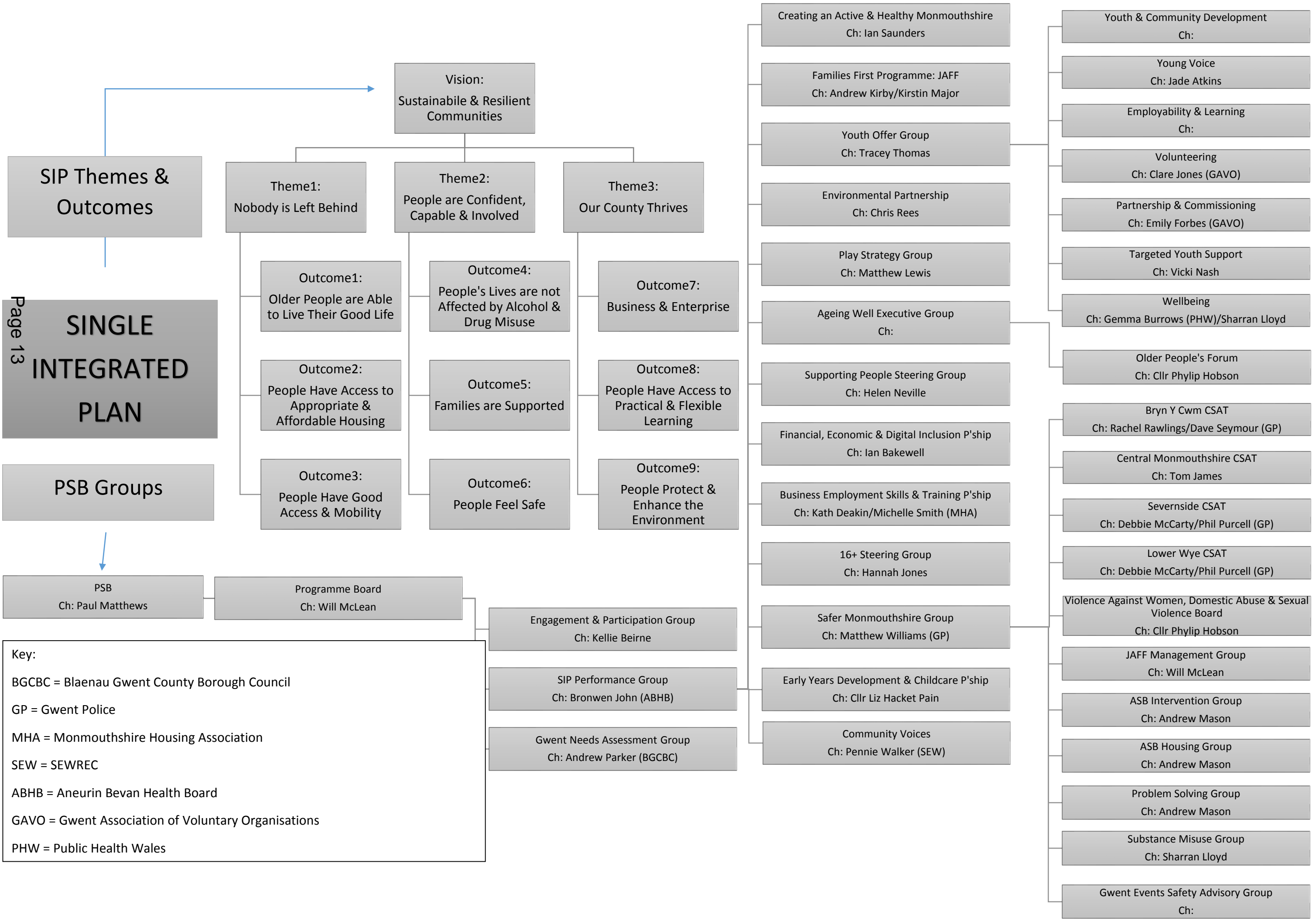
## Appendix 1: Families First Outcomes 2015-16

Outcome 1	Number of participants whose financial situation has stabilised or improved	8
Outcome 1	Number of participant adults (25 years and over) attaining a nationally recognised qualification or accreditation	7
Outcome 1	Number of participant adults (25 years and over) entering employment	14
Outcome 1	Number of participants that have entered further learning or training.	7
Outcome 2	Number of primary school children who have improved their school attendance	3
Outcome 2	Number of secondary school children (up to the age of 16 years at the point of entry) who have improved their school attendance	47
Outcome 2	Number of children who improve their basic skills	20
Outcome 2	Number of young people (aged 16-24 years) who improve their basic skills	3
Outcome 2	Number of participant parents with improved ability to support their child's learning and development needs.	200
Outcome 3	Number of participants with improved emotional/mental wellbeing	374
Outcome 3	Number of families of a disabled child accessing formal and informal respite	92
Outcome 3	Number of families affected by disability that report an improvement in family resilience	20
Outcome 3	Number of families that report they feel they can contribute to changes to their lifestyle/behaviours	64
Outcome 4	Number of individuals that report improved family dynamics	278
Outcome 4	Number of participant parents completing an evidence-based parenting programme	126
Outcome 4	Number of parents benefitting from a parenting intervention	224
Outcome 4	Number of domestic violence referrals	11

# Appendix 2: PSB Landscape







# SIP Themes & Outcomes

# SINGLE INTEGRATED PLAN

# PSB Groups

Vision:  
Sustainable & Resilient  
Communities

Theme1:  
Nobody is Left Behind

Theme2:  
People are Confident,  
Capable & Involved

Theme3:  
Our County Thrives

Outcome1:  
Older People are Able  
to Live Their Good Life

Outcome2:  
People Have Access to  
Appropriate &  
Affordable Housing

Outcome3:  
People Have Good  
Access & Mobility

Outcome4:  
People's Lives are not  
Affected by Alcohol &  
Drug Misuse

Outcome5:  
Families are Supported

Outcome6:  
People Feel Safe

Outcome7:  
Business & Enterprise

Outcome8:  
People Have Access to  
Practical & Flexible  
Learning

Outcome9:  
People Protect &  
Enhance the  
Environment

Creating an Active & Healthy Monmouthshire  
Ch: Ian Saunders

Families First Programme: JAFF  
Ch: Andrew Kirby/Kirstin Major

Youth Offer Group  
Ch: Tracey Thomas

Environmental Partnership  
Ch: Chris Rees

Play Strategy Group  
Ch: Matthew Lewis

Ageing Well Executive Group  
Ch:

Supporting People Steering Group  
Ch: Helen Neville

Financial, Economic & Digital Inclusion P'ship  
Ch: Ian Bakewell

Business Employment Skills & Training P'ship  
Ch: Kath Deakin/Michelle Smith (MHA)

16+ Steering Group  
Ch: Hannah Jones

Safer Monmouthshire Group  
Ch: Matthew Williams (GP)

Early Years Development & Childcare P'ship  
Ch: Cllr Liz Hacket Pain

Community Voices  
Ch: Pennie Walker (SEW)

Youth & Community Development  
Ch:

Young Voice  
Ch: Jade Atkins

Employability & Learning  
Ch:

Volunteering  
Ch: Clare Jones (GAVO)

Partnership & Commissioning  
Ch: Emily Forbes (GAVO)

Targeted Youth Support  
Ch: Vicki Nash

Wellbeing  
Ch: Gemma Burrows (PHW)/Sharran Lloyd

Older People's Forum  
Ch: Cllr Philip Hobson

Bryn Y Cwm CSAT  
Ch: Rachel Rawlings/Dave Seymour (GP)

Central Monmouthshire CSAT  
Ch: Tom James

Sevenside CSAT  
Ch: Debbie McCarty/Phil Purcell (GP)

Lower Wye CSAT  
Ch: Debbie McCarty/Phil Purcell (GP)

Violence Against Women, Domestic Abuse & Sexual  
Violence Board  
Ch: Cllr Philip Hobson

JAFF Management Group  
Ch: Will McLean

ASB Intervention Group  
Ch: Andrew Mason

ASB Housing Group  
Ch: Andrew Mason

Problem Solving Group  
Ch: Andrew Mason

Substance Misuse Group  
Ch: Sharran Lloyd

Gwent Events Safety Advisory Group  
Ch:

PSB  
Ch: Paul Matthews

Programme Board  
Ch: Will McLean

Engagement & Participation Group  
Ch: Kellie Beirne

SIP Performance Group  
Ch: Bronwen John (ABHB)

Gwent Needs Assessment Group  
Ch: Andrew Parker (BGCBC)

Key:

BGCBC = Blaenau Gwent County Borough Council

GP = Gwent Police

MHA = Monmouthshire Housing Association

SEW = SEWREC

ABHB = Aneurin Bevan Health Board

GAVO = Gwent Association of Voluntary Organisations

PHW = Public Health Wales

This page is intentionally left blank

<b>SUBJECT:</b>	<b>TACKLING POVERTY in MONMOUTHSHIRE</b>
<b>MEETING:</b>	<b>CYP Select Committee</b>
<b>DATE:</b>	<b>19<sup>th</sup> May 2016</b>
<b>DIVISION/WARDS AFFECTED:</b>	<b>All</b>

## NON-PUBLICATION

### 1. PURPOSE:

- 1.1 To provide an overview of Monmouthshire's Tackling Poverty Programme of Intent (see Appendix 1).
- 1.2 To highlight to the Committee the current activity taking place across Monmouthshire, which contributes towards tackling poverty.
- 1.3 To provide an overview of the current approach to tackling poverty, which is aligned to the Monmouthshire Single Integrated Plan.

### 2. RECOMMENDATIONS:

- 2.1 The Scrutiny Committee review the Tackling Poverty Programme of Intent and consider the approach currently being undertaken to further develop this work.

### 3. REASONS:

- 3.1 **Overview of Monmouthshire County Council's Tackling Poverty Programme of Intent**  
Poverty results in poorer educational and health outcomes for individuals, reduces life-chances and prevents people from fulfilling their potential. Poverty also imposes enormous costs on society and increased demands on public services. In Monmouthshire poverty is often hidden or in small pockets. Our focus is to identify those who are affected by poverty and provide a coherent range of services which support people to overcome barriers, allowing them to fully participate in society and engage in education, training and employment.

We intend to do this by focusing on the following:

- Preventing Poverty by giving people the best start in life. Breaking the link between socio-economic disadvantage, educational under-achievement and impaired life chances
  - Helping people to improve their skills, enhance the relevance of their qualifications and remove barriers to employment
  - Mitigating the impact of poverty through the provision of a coherent programme of support targeted towards those who are disadvantaged by poverty
- 3.2 Monmouthshire's Single Integrated Plan 2013-17 is viewed as the main vehicle for addressing inequality and tackling poverty. Working in partnership with the community, service providers and employers we recognise that tackling poverty is a cross-cutting theme where cooperation is critical in the delivery of our Plan to ensure that; **nobody is left behind, People are Confident, Capable and Involved and Our County Thrives.**
  - 3.3 The Strategic Needs Assessment undertaken to inform the production of the Single Integrated Plan recognised the disparity in wealth across the county and in key factors such as life

- expectancy. There are clearly identifiable areas in our towns where people are disadvantaged and this creates a sense of 'pockets of deprivation'.
- 3.4 The nature of poverty in Monmouthshire is also characterised by the rural make-up of the county. The Joseph Rowntree Foundation estimates it costs 10-20% more to achieve a basic adequate standard of living in rural than urban areas mostly due to increased transport and heating costs.
- 3.5 To address poverty we are driven by an ambition to align national and local initiatives to deliver a coherent range of services which are well publicised and accessible.
- 3.6 We have identified a number of PSB Partnerships delivering in the three key areas:
- **Preventing Poverty:** Supported by Flying Start, Families First Programmes, TAF, Early Years Development and Childcare Partnership and Integrated Youth Offer
  - **Helping people into work:** Supported 16+ Employability Group, Integrated Youth Offer, and Families First Programme
  - **Mitigating the Impact of Poverty:** Supported by the Financial, Economic and Digital Inclusion Partnership, Flying Start, Families First Programme and Integrated Youth Offer
- 3.7 **Partnership Groups, Governance and Accountability**
- The Corporate Anti-Poverty Champion and the Elected Member Anti-Poverty Champion are the strategic leads for anti-poverty in Monmouthshire.
  - The Corporate Anti-Poverty Champion has oversight of the poverty-related actions and targets for each of the partnership groups, which are tasked with delivering towards the Single Integrated Plan's nine key outcomes. (See Appendix 2)
  - Regular updates and reports on progress will be provided to the PSB Programme Board and Public Service Board.
- 3.8 The partnerships under the Monmouthshire Public Service Board (PSB) are instrumental in ensuring that we continue to focus our efforts and resources towards preventing poverty and mitigating the effects of poverty. Our focus moving forward will be to regularly review our performance indicators with each partnership to ensure that they are aligned to national initiatives and local needs, whilst ensuring an intelligence-led approach to targeting those in need. Consequently, the performance indicators may be subject to change as we refine our approach.
- 3.9 **Moving Forward**  
We are committed to the following:
- Establishing an Anti-Poverty Working Group that will oversee the development, integration, alignment and reporting of national and local anti-poverty programmes.
  - Developing an Anti-Poverty Action Plan that will bring together the performance indicators of Public Service Board Partnerships; which relate to tackling poverty.
  - Undertaking a mapping exercise of provisions which aim to prevent and mitigate the impact of poverty, highlighting gaps in provision to shape future commissioning.
  - Raising awareness of services that can help to alleviate poverty by updating and promoting Monmouthshire's Family Information Service (MONFIS).
4. **RESOURCE IMPLICATIONS:**  
There are no additional resource implications associated with the Tackling Poverty Programme of Intent. All work is being coordinated by the Anti-Poverty Champion and the Strategic Partnership Team.
5. **SUSTAINABLE DEVELOPMENT AND EQUALITY IMPLICATIONS:**  
Poverty imposes enormous costs on society from lower productivity, reduced social cohesion and increased demands on public services. Consequently, it is important to have an effective approach to preventing and mitigating the impact of poverty.

**6. BACKGROUND PAPERS:**

- Appendix 1: Tackling Poverty Programme of Intent.
- Appendix 2: Single Integrated Plan Vision, Themes and Outcomes.

**7. AUTHOR:**

Andrew Kirby, Families First Programme Manager  
Sharran Lloyd, PSB Development Manager

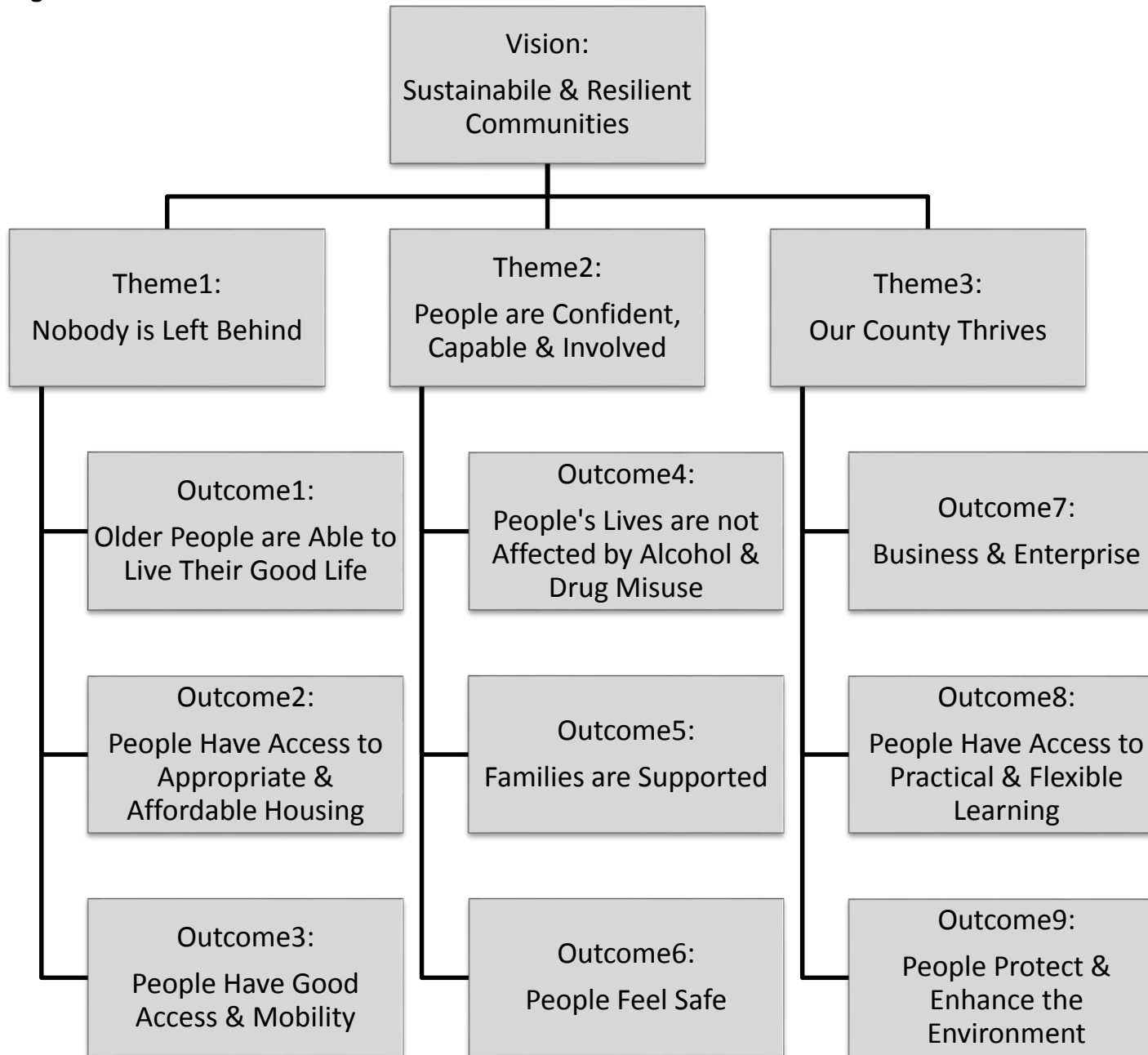
**8. CONTACT DETAILS:**

Tel: 01633 64 4344

Email: [Andrewkirby@monmouthshire.gov.uk](mailto:Andrewkirby@monmouthshire.gov.uk)

E-mail: [SharranLloyd@Monmouthshire.gov.uk](mailto:SharranLloyd@Monmouthshire.gov.uk)

Appendix 2: Single Integrated Plan Themes & Outcomes





## Monmouthshire Tackling Poverty Programme of Intent 2015-17

### **Introduction**

Poverty reduces life-chances and prevents people from fulfilling their potential and results in poorer educational and health outcomes for individuals. It also imposes enormous costs on society through lower productivity, reduced social cohesion and increased demands on public services. In Monmouthshire poverty is often hidden and in small pockets. Our purpose is to identify those who are affected by poverty and provide a coherent range of services which support people to overcome barriers, allowing them to fully participate in society and engage in education, training and employment.

### **Relative income poverty**

Poverty in Wales is a relative concept; people are described as living in poverty if they are considerably worse off than the majority of the population. In 2004, the European Commission provided the following definition:

“People are said to be living in poverty if their income and resources are so inadequate as to preclude them from having a standard of living considered acceptable in the society in which they live. Because of their poverty they may experience multiple disadvantages through unemployment, low income, poor housing, inadequate health care and barriers to lifelong learning, culture, sport and recreation...”

So while, poverty can be defined and measured in various ways, the most commonly used approach is **relative income poverty**. Each household’s income, adjusted for family size, is compared to median income. Those with less than 60 per cent of median income are classified as poor. This ‘poverty line’ is the agreed international measure used throughout the European Union.

Material deprivation, a proposed measure in the Well-being of Future Generations (Wales) Act, highlights the consequence of long-term poverty on whether households can afford necessary goods and activities. Material deprivation is an important indicator because it can affect educational, health and behavioural outcomes.

### **Welsh Government**

Welsh Government Tackling Poverty objectives are outlined in Tackling Poverty Action Plan 2012-2016; and Child Poverty Strategy for Wales. Our approach is to tailor the implementation of the Tackling Poverty objectives to meet local needs.

- Preventing Poverty by giving people the best start in life. Breaking the link between socio-economic disadvantage, health inequalities, educational under-achievement and impaired life chances.

## *Sustainable and Resilient Communities*

*Nobody is left behind    People are Confident, Capable and Involved    Our County Thrives*

- To help people to improve their skills, enhance the relevance of their qualifications and remove barriers to employment.
- Mitigate the impact of poverty through the provision of a coherent programme of support targeted towards those who are disadvantaged by poverty and/or health inequality.

### **Monmouthshire's Single Integrated Plan**

Monmouthshire's Single Integrated Plan 2013-17 is the main vehicle for addressing inequality and tackling poverty. Working in partnership with the community, service providers and employers we recognise that tackling poverty is a cross-cutting theme where cooperation is critical in the delivery of our Plan to ensure that; ***nobody is left behind, People are Confident, Capable and Involved and Our County Thrives.***

Monmouthshire's Draft Tackling Poverty Action Plan, which pulls together all the Local Service Board (LSB) partnerships' poverty-related Performance Indicators, is the main vehicle for ensuring that tackling poverty is prioritised whilst avoiding duplication of effort.

We recognise the importance of 'employment in good jobs' in tackling poverty and will continue to focus on creating opportunities for employment and self-employment. Working in partnership with the Business, Employment and Skills Partnership we will continue to make the connections in relation to skills, employability, entrepreneurship and job creation.

Collaboration with GAVO and third sector organisations is an important part of our approach. Volunteering provides valuable experience and builds confidence, communication and employability skills, whilst third sector providers contribute a range of services which compliment local authority provision, statutory services and Welsh Government funded programmes.

### **How Poverty looks in Monmouthshire**

The Strategic Needs Assessment undertaken to inform the production of the Single Integrated Plan recognised the disparity in wealth across the county and in key factors such as life expectancy. There are clearly identifiable areas in our towns where people are disadvantaged and this sense of 'pockets of deprivation' is often exacerbated as many are close to areas of affluence. The ranges that exist in Monmouthshire can be significant. For instance in Cantref (Abergavenny) 26.2% of the population are in receipt of income-related benefit compared to 4.3% in Usk.

Poverty in Monmouthshire is also characterised by the rural nature of the county. Rural deprivation adds an additional dimension to our work to tackle poverty as the majority of the population live in settlements of less than 2,500 people. We know that 22.4% of Monmouthshire Lower Super Output Areas are in the most deprived 10% in Wales for access to services, making it the 6<sup>th</sup> most deprived local authority in Wales in this domain. Analysis of life expectancy, which is a key indicator of health inequality, shows a difference between the least and most deprived areas in Monmouthshire of 13 years for males and 10 years for females.

Other characteristics of rural deprivation include increased social isolation, higher transport costs and fuel poverty. The Joseph Rowntree Foundation estimates it costs 10-20% more to achieve a basic adequate standard of living in rural than urban areas mostly due to increased transport and heating costs. People without transport remain geographically isolated, unable to access services, activities and job opportunities.



## *Sustainable and Resilient Communities*

*Nobody is left behind    People are Confident, Capable and Involved    Our County Thrives*

The average house price in Monmouthshire is £242,000 compared to an all Wales average of £161,000. More significantly 'entry' level properties are in excess of £50,000 more than the Wales average. The average house price is seven times more than the average income; critically the 'first home' ratio is 10:1 (2013 data). This restricts the ability of those on low incomes to enter the housing market, indicating the relative lack of affordability of housing in our county.

The rising cost of living, static incomes, changes to benefits or unemployment can lead some people to struggle to pay for the essentials such as heating and food. Despite being a relatively wealthy county, Monmouthshire has seen an increase in the use of Food Banks in recent years and now has Food Banks in Abergavenny, Caldicot, Chepstow and Monmouth.

To address poverty we are driven by an ambition to align national and local initiatives to deliver a coherent range of services which are well publicised and accessible. For example;

- Early Years and Childcare, Flying Start, Families First, the Acorn Project, JAFF / Team Around the Family and Pupil Deprivation Grant.
- Our Integrated Youth Offer, Employment and Training Support, Jobs Growth Wales, Youth Engagement and Progression Framework.
- Strategies to improve financial, economic and digital inclusion for those most affected by poverty.
- Supporting People Strategies to prevent homelessness and enable independent living; and Older People Strategies to address the issues faced by older people in Monmouthshire.

### **Partnership Groups, Governance and Accountability**

Welsh Government has developed the role of the Anti-Poverty Champions in each local authority area to provide a point of focus and "sponsorship" across the wide range of programmes, policies and initiatives that help prevent and address the effects of poverty. The Corporate Anti-Poverty Champion for Monmouthshire sits on the Gwent Anti-Poverty forum.

The Gwent Anti-Poverty Priorities for 2015-16 are:

- Improved Employment Pathways
- Healthy Lifestyles: Mental Health
- Child Obesity
- Sharing Best Practice

The Corporate Anti-Poverty Champion and the Elected Member Anti-Poverty Champion are the strategic leads for anti-poverty in Monmouthshire.

The Corporate Anti-Poverty Champion has oversight of the poverty-related actions and targets for each of the partnership groups which are tasked with delivering the Single Integrated Plan's nine key outcomes. Please refer to Single Integrated Plan Vision, Themes and Outcomes. **See Annex 1**

Regular updates and reports will be provided to the Programme Board and Local Service Board

### **Tackling Poverty Performance Indicators**

Our Local Service Board (LSB) partnerships are instrumental in ensuring that we focus our efforts and resources to prevent poverty and mitigating the effects of poverty. We already have identified key performance indicators which relate to the poverty agenda and our focus moving forward will be to

## *Sustainable and Resilient Communities*

*Nobody is left behind    People are Confident, Capable and Involved    Our County Thrives*

regularly review them with each partnership to ensure that they are aligned to national initiatives and local needs, whilst ensuring an intelligence-led approach to targeting those in need. Consequently, the performance indicators may be subject to change as we refine our approach.

### **PI's for Preventing Poverty...**

Supported by Flying Start, Families First Programmes, Early Years Development and Childcare Partnership, Integrated Youth Offer and Creating an Active Monmouthshire:

- Proportion of children living in families in receipt of out of work benefits or tax credits where their reported income is less than 60% of the median
- Percentage of Flying Start children aged 3 who reach developmental milestones
- Percentage of Flying Start children who do not reach developmental milestones at 2 but achieve these at 3
- Setting up early identification systems across schools to identify those on Free School Meals or low achieving so additional support can be provided
- Percentage of low birth weight babies
- Percentage of 4-5yr olds over-weight or obese

### **PI's helping people into work...**

Supported by Business, Employment and Skills Partnership, Integrated Youth Offer, Families First Programme:

- Unemployed persons as a percentage of the Economically Active population aged 16-64
- Percentage of young people 16 -24 who are NEET (Not in Education, Employment or Training)
- Percentage of children achieving KS4 L2T including English / Welsh and Maths
- Percentage of secondary school pupils supported by the Pupil Referral Service achieving nationally recognised qualifications
- Percentage attendance at Primary Schools
- Percentage attendance at Secondary Schools

### **PI's for Mitigating the Impact of Poverty**

Supported by the Financial, Economic and Digital Inclusion Partnership, Flying Start, Families First Programme and the Integrated Youth Offer:

- Percentage of Households where homelessness is prevented for at least 6 months
- *(n) Additional (Affordable) Housing Units Built / Percentage of all additional housing units provided during the year that were affordable. (awaiting clarification)*

### **Next Steps:**

- Monmouthshire's "Draft" Tackling Poverty Action Plan will be presented to the Programme Board in December 2015, for review and sign-off prior to LSB in January 2016.
- The approach we are taking is to make tackling poverty a cross-cutting theme, with the establishment of a multi-agency Tackling-Poverty Working Group that will oversee the integration, alignment and reporting of national and local anti-poverty programmes.

Children and Young People's Select Committee				
Meeting Date	Subject	Purpose of Scrutiny	Responsibility	Type of Scrutiny
21 <sup>st</sup> April 2016	<u>Partnership Scrutiny:</u>		Sharran Lloyd	Performance Monitoring
Joint Meeting with Adults Select Committee	Anti-poverty (Single Integrated Plan Theme 3)	Presentation of the Anti-poverty Statement of Intent	Will Mclean (Anti-poverty Champion)	
	Families First Programme	Digital Stories: What we are delivering and the impact on families	Andrew Kirby	
	Joint Assessment Family Framework (JAFF)	Report on "Families First" (the central WG funded programme of the JAFF (which has 7 family focussed projects in total)	Kirsten Major	
Special CYP Select 2016 15 <sup>th</sup> June 2pm	Children's Services Improvement Journey	To report key changes in Children's Services: <ul style="list-style-type: none"> <li>- Workforce Development Plan</li> <li>- Commissioning Plan</li> <li>- Practice Development Plan</li> </ul>	Claire Marchant	Performance Monitoring
	Performance Update Year End Children's services Scorecard	To scrutinise the performance report for quarter 3 for Children's Services (including Children's Social Care).	Matthew Gatehouse	Performance Monitoring

**Standing /Future Items for Scrutiny:**

- × **Alternative Service Delivery Model** - Joint Select Meeting approx. mid May 2016.
- × **CYP Self-evaluation** - continued scrutiny
- × **Safeguarding Performance**
- × **21<sup>st</sup> Century Schools** - progress report
- × **Mounton House Review**

- × **Home to School Transport** - Cross party advisory panel established, recommendations to be considered by select and their feedback incorporated into the consultation process.
- × **Corporate Parenting Report** - Annual scrutiny together with discussion on the issues, actions proposed and strategies in place to manage placements and reduce MCC's dependency upon external agencies.
- × **Healthy School Meals Scheme** - Pre-decision scrutiny.
- × **Review of Collaborative Arrangements** - proposed reduction in spending on 16-17 and 17-18.
- × **ICT in Schools**
- × **Summer Play schemes**
- × **Youth Offending Service Report**

## Council and Cabinet Business – Forward Plan

Monmouthshire County Council is required to publish a Forward Plan of all key decisions to be taken in the following four months in advance and to update quarterly. The Council has decided to extend the plan to twelve months in advance, and to update it on a monthly basis.

Council and Cabinet agendas will only consider decisions that have been placed on the planner by the beginning of the preceding month, unless the item can be demonstrated to be urgent business

Subject	Purpose	Consultees	Author
<b>2<sup>nd</sup> MARCH 2016 – CABINET</b>			
MEET strategy			Tracey Thomas
Welsh Church Fund Working Group	The purpose of this report is to make recommendations to Cabinet on the Schedule of Applications 2015/16 meeting 5 held on the 21 <sup>st</sup> January 2016		Dave Jarrett
2015/16 Education & Welsh Church Trust Funds Investment & Fund Strategy	The purpose of this report is to present to Cabinet for approval the 2016/17 Investment and Fund strategy for Trust Funds for which the Authority acts as sole or custodian trustee for adoption and to approve the 2015/16 grant allocation to Local Authority beneficiaries of the Welsh Church Fund.		Dave Jarrett
New Monmouthshire Carers Strategy (Adults)			Deb Saunders
Mounton House Formula Change			Nikki Wellington
Proposed closure of Deri View			Debbie Morgan
Removal of post from CYP			Sharon Randall

Subject	Purpose	Consultees	Author
			Smith
SRS			Sian Hayward
Pay Policy			Sally Thomas
<b>9<sup>th</sup> MARCH 2016 – INDIVIUDAL DECISION</b>			
Flexi retirement request			Ian Bakewell
Allocation Policy			Karen Durant
<b>10<sup>th</sup> MARCH 2016 – COUNCIL</b>			
Final Composite Council Tax Resolution	To set budget and council tax for 2016/17		Joy Robson
Treasury Management Strategy 2016/17	To accept the annual treasury management strategy		Joy Robson
The Future Food Waste Treatment Strategy: Outline Business Case & Inter Authority Agreement	for the Council to consider the inclusion of MCC in the Heads of the Valleys Anaerobic Digestion Procurement. To agree the Outline Business Case and the Inter Authority Agreement which commits the Council to the procurement and partnership and a 15-20 year contract.	SLT Cabinet	Rachel Jowitt
The Future Food Waste Treatment Strategy: Outline Business Case & Inter Authority Agreement	for the Council to consider the inclusion of MCC in the Heads of the Valleys Anaerobic Digestion Procurement. To agree the Outline Business Case and the Inter Authority Agreement which commits the Council to the procurement and partnership and a 15-20 year contract.	SLT Cabinet	Rachel Jowitt
Waste Strategy			Carl Touhig/ Roger Hoggins
CIL			Martin Davies
SPG			Martin Davies
Draft Diary			
Pay Policy			Sally Thomas
<b>23<sup>rd</sup> MARCH 2016 – INDIVIUDAL CABINET MEMBER DEICSIONS</b>			
Release of restrictive covenant			Gareth King
Creation of business support officer post	To gain agreement to employ a full-time Business Support Officer within Children's		Gill Cox

Subject	Purpose	Consultees	Author
	Services.		
Tender for Treasury Services			Mark Howcroft/Jon Davies
Conservation area appraisals	To adopt as supplementary planning guidance		Mark Hand
Flexible retirement request			Roger Hoggins
<b>24<sup>th</sup> MARCH 2016 – SPECIAL CABINET</b>			
Risk Assessment			Richard Jones
Proposed closure of Llanfair Kilgeddin CIW VA Primary School (23 <sup>rd</sup> March)			Debbie Morgan
Proposed establishment of an ALN facility and reduction in the capacity at Monmouth Comprehensive School (23 <sup>rd</sup> March 2016)			Debbie Morgan
Removal of CYP post (EXEMPT)			Sharon Randall-Smith
CYP Call-In (Mounton House)			Tracey Harry
<b>13<sup>TH</sup> APRIL 2016 - CABINET</b>			
Digital Strategy	To update members on progress with the digital strategy and to agree the next steps.		Sian Hayward
Community Coordination evaluation of pilot			Matt Gatehouse
Proposed Closure of Deri View Special Needs Resource Base			Debbie Morgan
Mardy Park			Colin Richings
EAS Business Plan			Debbie Harteveld (EAS)
Play Sufficiency Assessment			Matthew Lewis
People and organisational strategy			Lisa Knight Davies

Subject	Purpose	Consultees	Author
Acorn Staffing Restructure			Clair Evans
Recommendations from Select			Hazel Ilett
<b>27<sup>th</sup> APRIL 2016 – INDIVIDUAL DECISION</b>			
SHG Programme			Shirley Wiggam
Moving Boverton House from CYP into the Enterprise Directorate			Ian Saunders
Monmouthshire Flood Risk Management Plan			Dave Harris
Primary Shopping Frontages Supplementary Planning Guidance'			Jane Coppock
<b>4<sup>TH</sup> MAY 2016 – CABINET</b>			
Welsh Church Fund Working Group	The purpose of this report is to make recommendations to Cabinet on the Schedule of Applications 2015/16, meeting 5 held on the 10 <sup>th</sup> March 2016		Dave Jarrett
BUDGET MANDATE 2016/17 – PREPAREDNESS ASSESSMENT	To provide Cabinet with an assessment on the preparedness of services to deliver the 2016/17 budget mandates.		Deb Mountfield
Gilwern Setion 106 Funding	reporting back following the deferral of the Gilwern decisions at the February meeting		Mike Moran
Church Road Caldicot S106	new, short report to include some funding into the capital budget for 2016/17		Mike Moran
Monmouth S106 Funding			Mike Moran
Transfer management of Raglan VC Primary school			Cath Sheen



Subject	Purpose	Consultees	Author
former Junior building to the Enterprise Directorate			
Funding to Caldicot Town Team – Caldicot goes pop			Judith Langdon
Funding to Caldicot Town Team – Caldicot Market			Judith Langdon
<b>4<sup>th</sup> MAY 2016 – SPECIAL COUNCIL</b>			
<b>11<sup>TH</sup> MAY 2016 – INDIVIDUAL CABINET MEMBER DECISION</b>			
Transfer member of staff from Policy and Performance to CYP Directorate			Will McLean
SWTRA			Roger Hoggins
Monmouth Section 106 Funding – St Thomas Church Hall.			Mike Moran
40mph Speed Limit B4235 Myndbach			Paul Keeble
<b>12<sup>TH</sup> MAY 2016 – COUNCIL</b>			
Improvement Plan 2016-17			Matt Gatehouse
<b>25<sup>TH</sup> MAY 2016 – INDIVIDUAL CABINET MEMBER DECISION</b>			
Supplementary Planning Guidance – Draft Programme			Jane Coppock
Review of the administrative fee (Abergavenny Town Centre Loan Scheme) Councillor Greenland			Stephen Griffiths
<b>8<sup>th</sup> JUNE 2016 – CABINET</b>			
Contaminated Land report			Huw Owen / David

Subject	Purpose	Consultees	Author
for Cabinet decision			Jones
Review of Sundry Debtors policy			Joy Robson
Welsh Church Fund Working Group	The purpose of this report is to make recommendations to Cabinet on the Schedule of Applications 2016/17, meeting 1 held on the 12th May 2016.		Dave Jarrett
Revenue & Capital Monitoring 2015/16 Outturn Forecast Statement	To provide Members with information on the outturn position of the Authority for the 2015/16 financial year.		Mark Howcroft
Monmouthshire Carers strategy			Bernard Bonniface/ Deb Saunders
Volunteering Strategy			Owen Wilce
Crick Road Development Site	To consider an in principle decision to dispose of the Crick Road LDP site to Melin Homes to maximise both social and economic value through an open book, collaborative model		Deb Hill-Howells
DSS Annual Report			Claire Marchant
Capability Policy for school based employees			Sally Thomas
<b>23<sup>RD</sup> JUNE - COUNCIL</b>			
Audit Committee Annual Report 2015/16, Annual report 2014/15			Andrew Wathan
<b>29<sup>th</sup> JUNE 2016 – INDIVIDUAL CABINET DECISION</b>			
Map modification order			Mandy Mussell
<b>6<sup>TH</sup> JULY 2016 – CABINET</b>			
Welsh Language Monitoring Report			Alan Burkitt
MTFP and Budget Process 2017/18	To highlight the context within the Medium Term Financial Plan (MTFP) will be developed for 2017/18 to 2020/21		Joy Robson

Subject	Purpose	Consultees	Author
Budget Monitoring report – Period 2	The purpose of this report is to provide Members with information on the forecast outturn position of the Authority at end of month reporting for 2016/17 financial year.		Joy Robson/Mark Howcroft
Welsh Church Fund Working Group	The purpose of this report is to make recommendations to Cabinet on the Schedule of Applications 2016/17, meeting 2 held on the 23 <sup>rd</sup> June 2016.		Dave Jarrett
DSS Annual report			Claire Marchant
<b>28<sup>th</sup> JULY - COUNCIL</b>			
DSS Annual report			Claire Marchant
<b>22<sup>ND</sup> SEPTEMBER 2016 - COUNCIL</b>			
MCC Audited Accounts 2015/16(formal approval)	To present the audited Statement of Accounts for 2015/16 for approval by Council		Joy Robson
IA 260 report – MCC accounts	To provide external audits report on the Statement of Accounts 2015/16		WAO
<b>5<sup>TH</sup> OCTOBER 2016 – CABINET</b>			
MTFP and Budget proposals for 2017/18	To provide Cabinet with revenue Budget Proposals for 2017/18 for consultation purposes		Joy Robson
Capital Budget Proposals	To outline the proposed capital budget for 2017/18 and indicative capital budgets for the 3 years 2018/19 to 2020/21		Joy Robson
<b>2<sup>ND</sup> NOVEMBER 2016 – CABINET</b>			
Welsh Church Fund working group	The purpose of this report is to make recommendations to Cabinet on the Schedule of Applications 2016/17, meeting 3 held on the 22 <sup>nd</sup> September 2016.		Dave Jarrett
Budget Monitoring report – Period 6	The purpose of this report is to provide Members with information on the forecast outturn position		Joy Robson/ Mark Howcroft

Subject	Purpose	Consultees	Author
	of the Authority at end of month reporting for 2016/17 financial year		
<b>7<sup>TH</sup> DECEMBER 2016 – CABINET</b>			
Welsh Church Fund working group	The purpose of this report is to make recommendations to Cabinet on the schedule of applications 2016/17, meeting 4 held on 20 <sup>th</sup> October 2016.		Dave Jarrett
Council Tax Base 2017/18 and associated matters	To agree the Council Tax Base figure for submission to the Welsh Government together with the collection rate to be applied for 2017/18 and to make other necessary related statutory decisions		Sue Deacy/Ruth Donovan
Review of Fees and Charges	To review all fees and charges made for services across the Council and identify proposals for increasing them in 2017/18		Joy Robson
Revenue & Capital Budget final proposals after public consultation	To present Revenue and Capital Budget proposals following receipt of final settlement		Joy Robson
<b>14<sup>TH</sup> DECEMBER 2016 – INDIVIDUAL MEMBER DECISION</b>			
Local Government (Wales) Act 1994 The Local Authorities (Precepts)(Wales) Regulations 1995	To seek approval of the proposals for consultation purposes regarding payments to precepting Authorities during 2017/18 financial year as required by statute		Joy Robson
<b>11<sup>TH</sup> JANUARY 2017 – CABINET</b>			
Welsh Church Fund Working Group	The purpose of this report is to make recommendations to Cabinet on the Schedule of Applications 2016/17 meeting 5 held on the 1 <sup>st</sup> December 2016.		Dave Jarrett
<b>18<sup>TH</sup> JANUARY 2017 – INDIVIDUAL MEMBER DECISION</b>			

Subject	Purpose	Consultees	Author
Local Government (Wales) Act 1994 The Local Authorities (Precepts)(Wales) Regulations 1995	To seek Members approval of the results of the consultation process regarding payments to precepting Authorities for 2017/18 as required by statute.		Joy Robson
<b>19<sup>TH</sup> JANUARY 2017 - COUNCIL</b>			
Final Budget Proposals			Joy Robson
Council Tax Reduction Scheme 2017/18			Ruth Donovan
<b>1<sup>ST</sup> FEBRUARY 2017 – CABINET</b>			
Budget Monitoring report – period 9	The purpose of this report is to provide Members with information on the forecast outturn position of the Authority at end of month reporting for 2016/17 financial year.		Joy Robson/Mark Howcroft
<b>1<sup>ST</sup> MARCH 2017 – CABINET</b>			
2016/17 Education and Welsh Church Trust Funds Investment and Fund Strategy	The purpose of this report is to present to Cabinet for approval the 2017/18 Investment and Fund Strategy for Trust Funds for which the Authority acts as sole or custodian trustee for adoption and to approve the 2016/17 grant allocation to Local Authority beneficiaries of the Welsh Church Fund		Dave Jarrett
Welsh Church Fund Working Group	The Purpose of this report is to make recommendations to Cabinet on the Schedule of applications 2016/17, meeting 6 held on the 19 <sup>th</sup> January 2017		Dave Jarrett

Subject	Purpose	Consultees	Author
<b>9<sup>TH</sup> MARCH 2017 - COUNCIL</b>			
Final Composite Council Tax Resolution	To set budget and Council tax for 2017/18		Joy Robson
Treasury Management Strategy 2017/18	To accept the annual Treasury Management Strategy		Joy Robson
<b>5<sup>TH</sup> APRIL 2017 – CABINET</b>			
Welsh Church Fund Working Group	The purpose of this report is to make recommendations to Cabinet on the Schedule of Applications 2016/17, meeting 7 held on the 9 <sup>th</sup> March 2017.		Dave Jarrett
<b>3<sup>RD</sup> MAY 2017 – CABINET</b>			
Welsh Church Fund Working Group	The purpose of this report is to make recommendations to Cabinet on the Schedule of Applications 2016/17, meeting 8 held on the 30 <sup>th</sup> March 2017.		Dave Jarrett